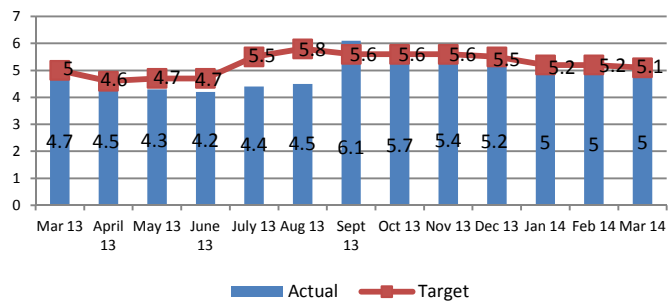
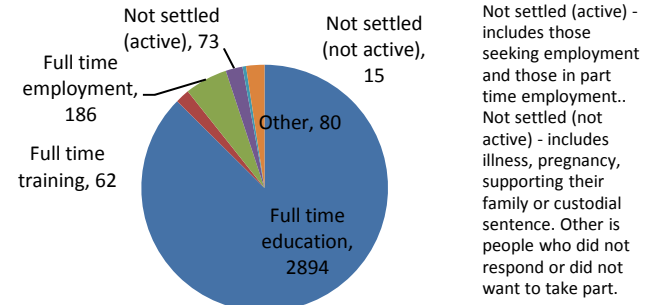


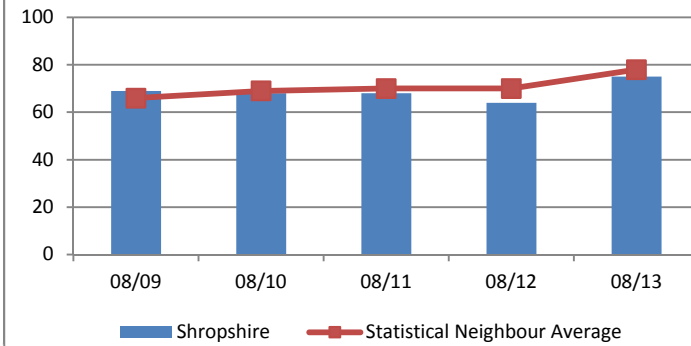
1. L&S01a 16 to 18yr olds who are not in education, employment and training



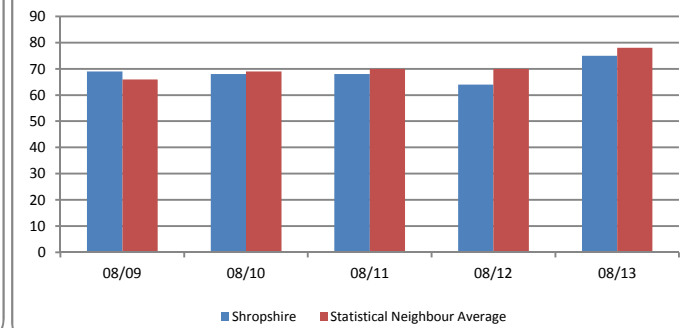
2. L&S03 % of young people completing yr11 who continue in learning



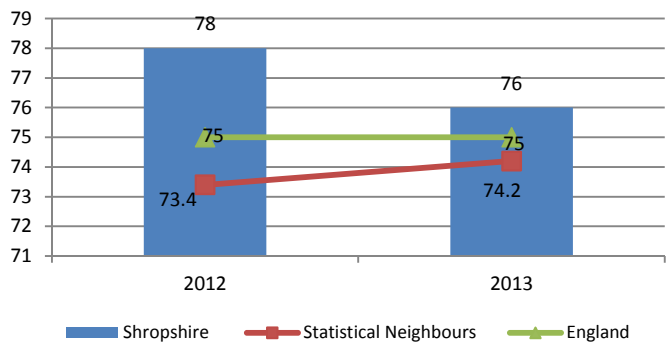
3. % of Schools rated good/outstanding



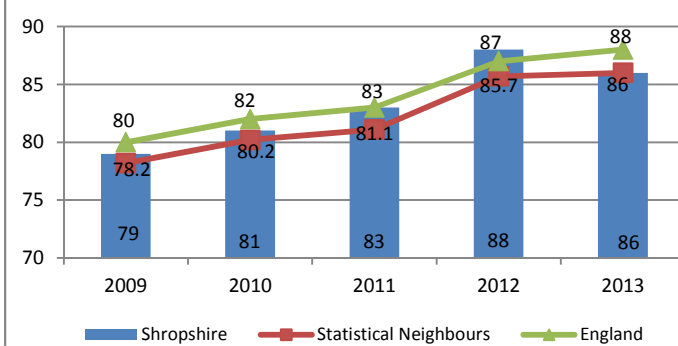
4. Percentage of places/ learners in good or outstanding schools



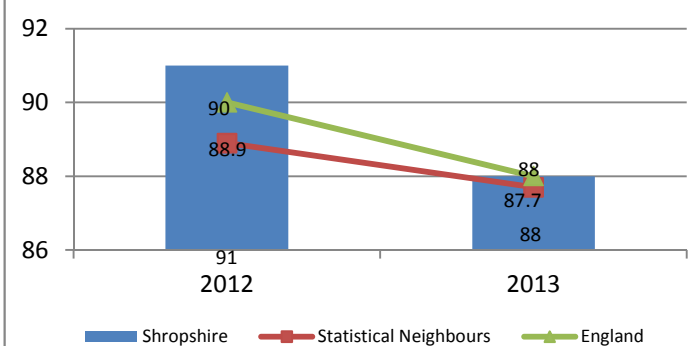
5. % of pupils achieving KS2 level 4 in reading writing and maths



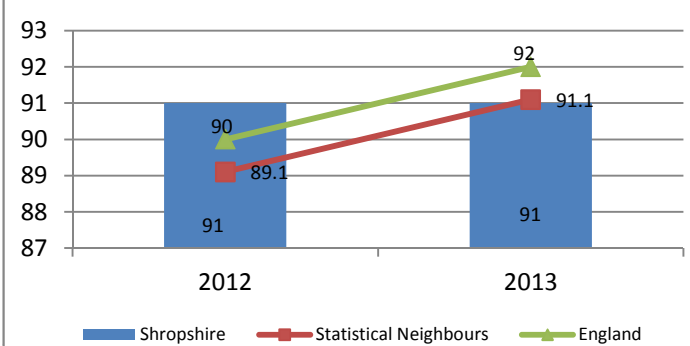
6. % of pupils making expected progress from KS1 to KS2 Maths



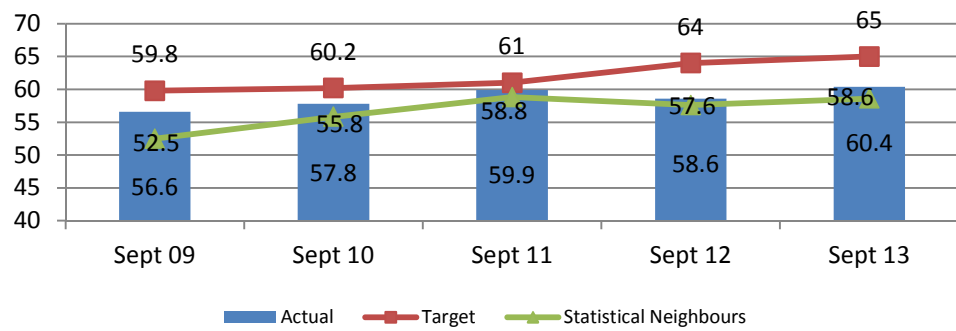
7. % of pupils making expected progress KS1 to KS2 Reading



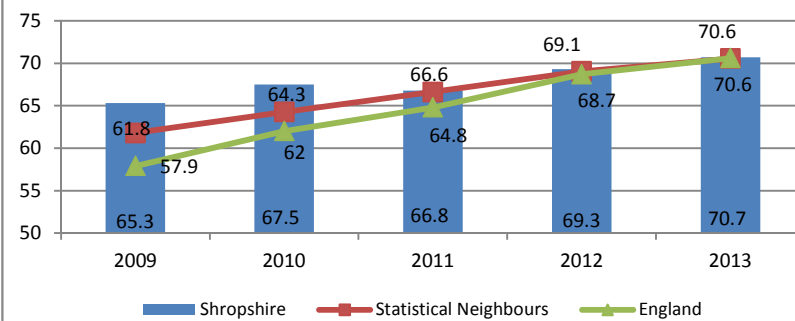
8. % of pupils making expected progress KS1 to KS2 Writing



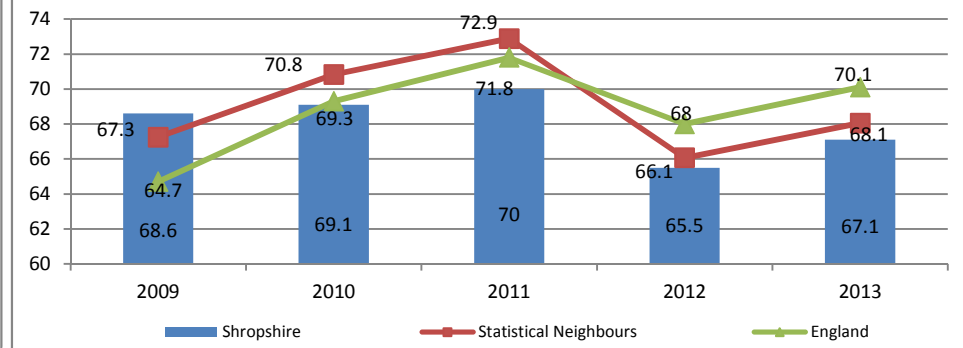
9. NI075 5 or more A*-C at GCSE or equivalent incl. Eng and Maths



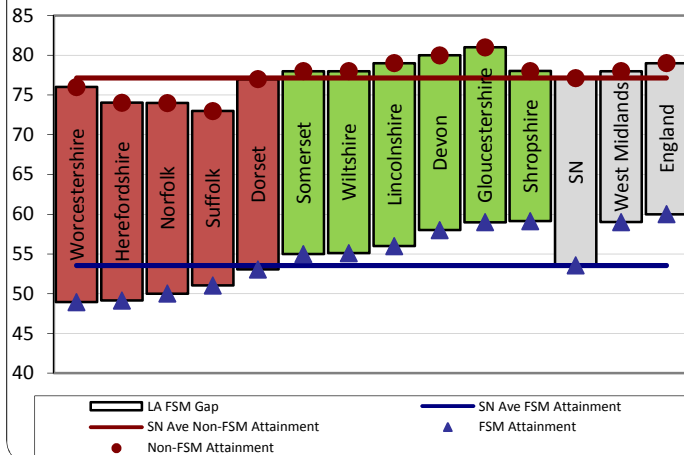
10. % of pupils making expected progress from KS2 to KS4 Maths



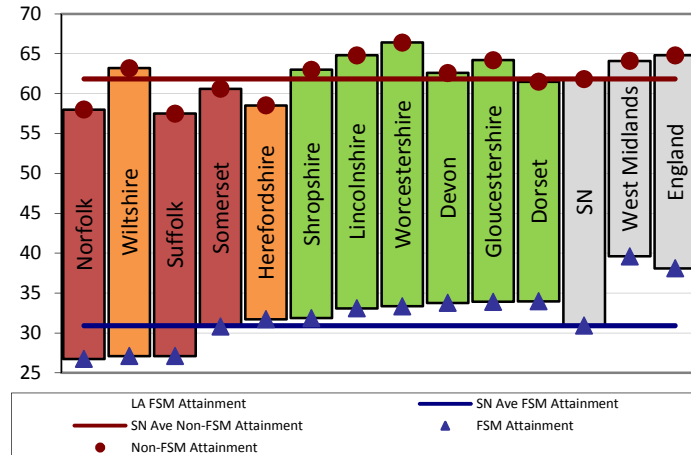
11. % of pupils making expected progress from KS2 to KS4 English



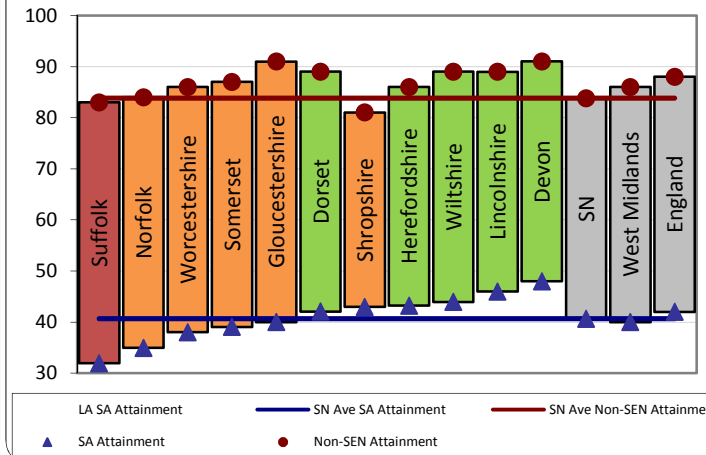
12. KS2 Stage FSM/Non-FSM Attainment & Gap 2013 Results



13. GCSE Stage FSM/Non-FSM Attainment & Gap 2013 Results



14. KS2 Stage SA/Non-SEN Attainment & Gap 2013 Results



15. GCSE Stage SA/Non-SEN Attainment & Gap 2013 Results

